



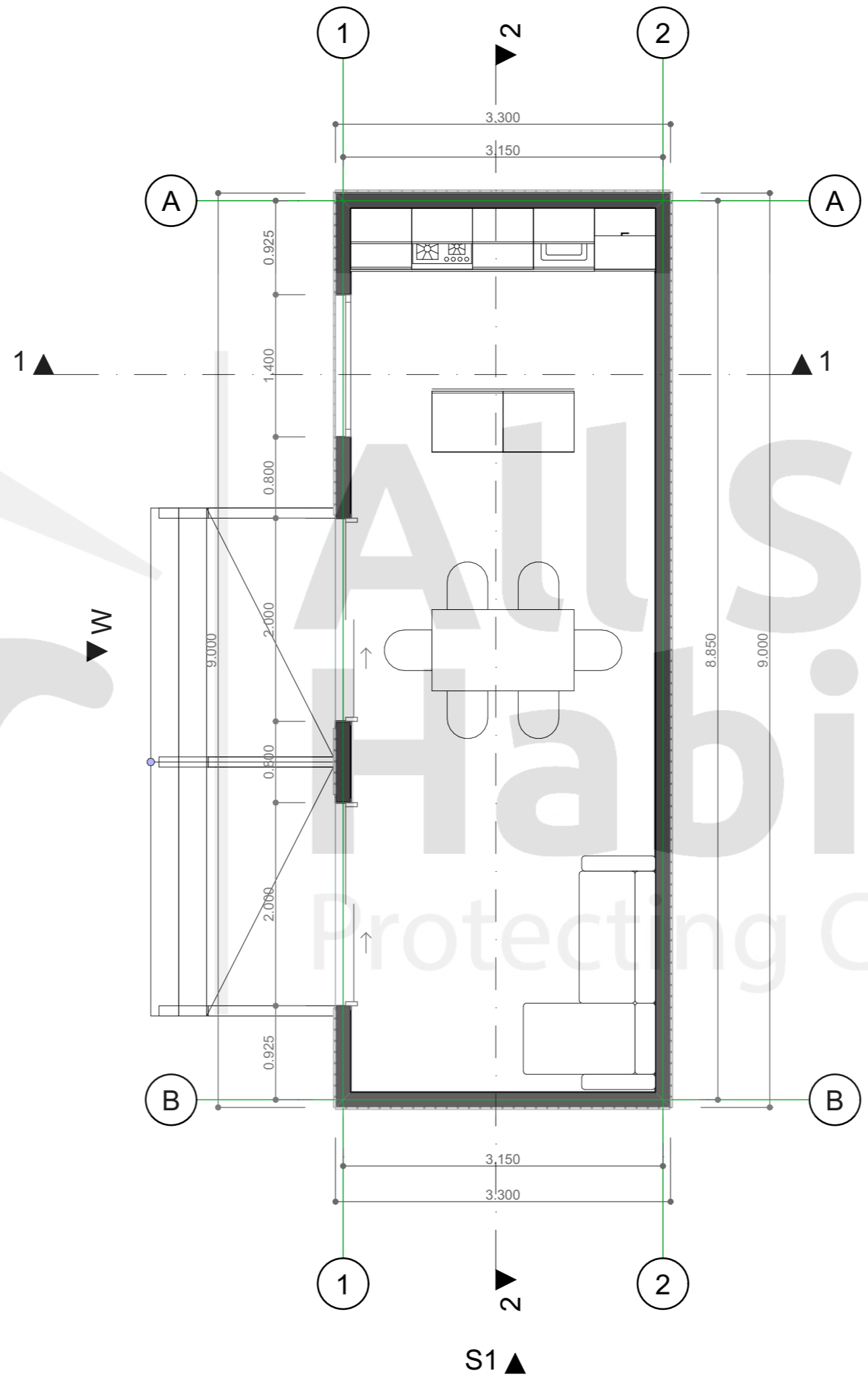
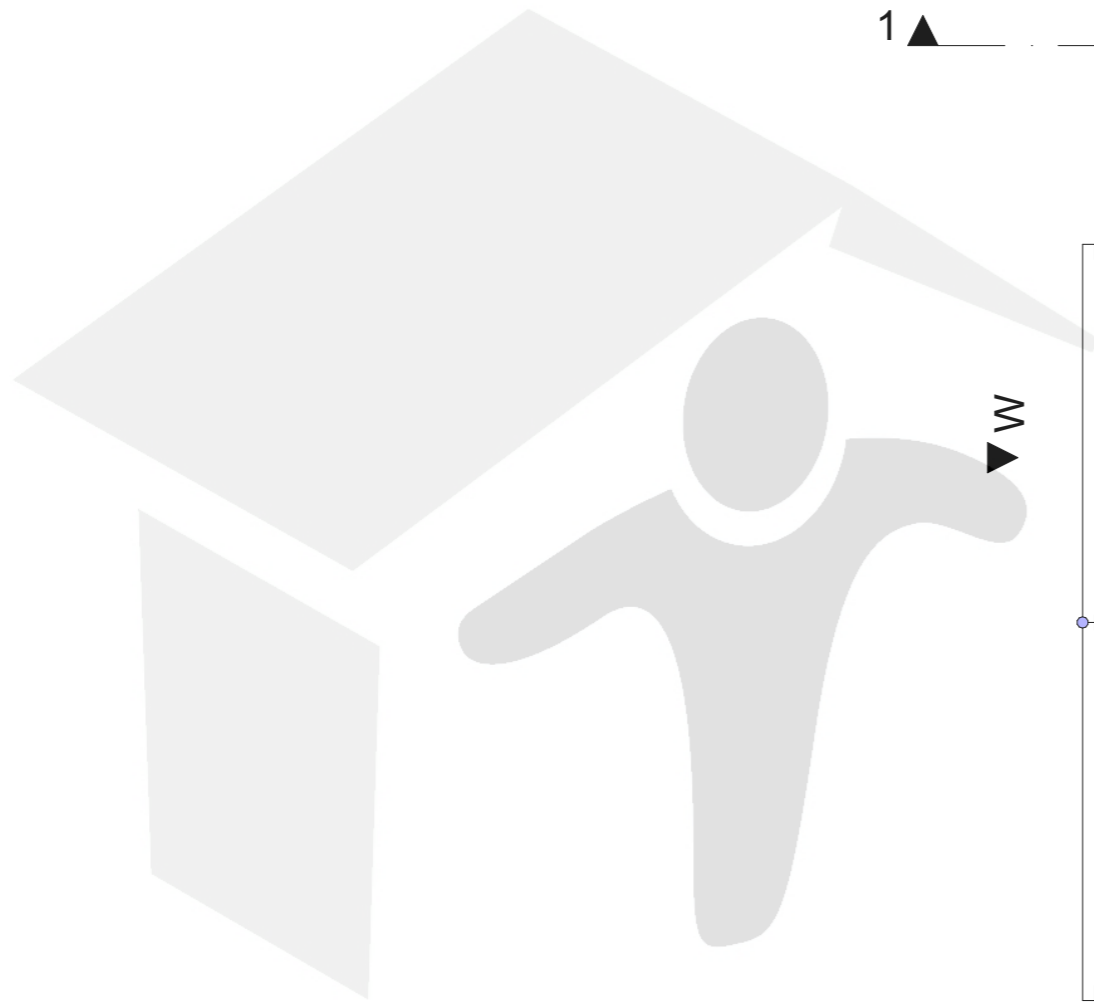
**All Safe
Habitats**
Protecting Community

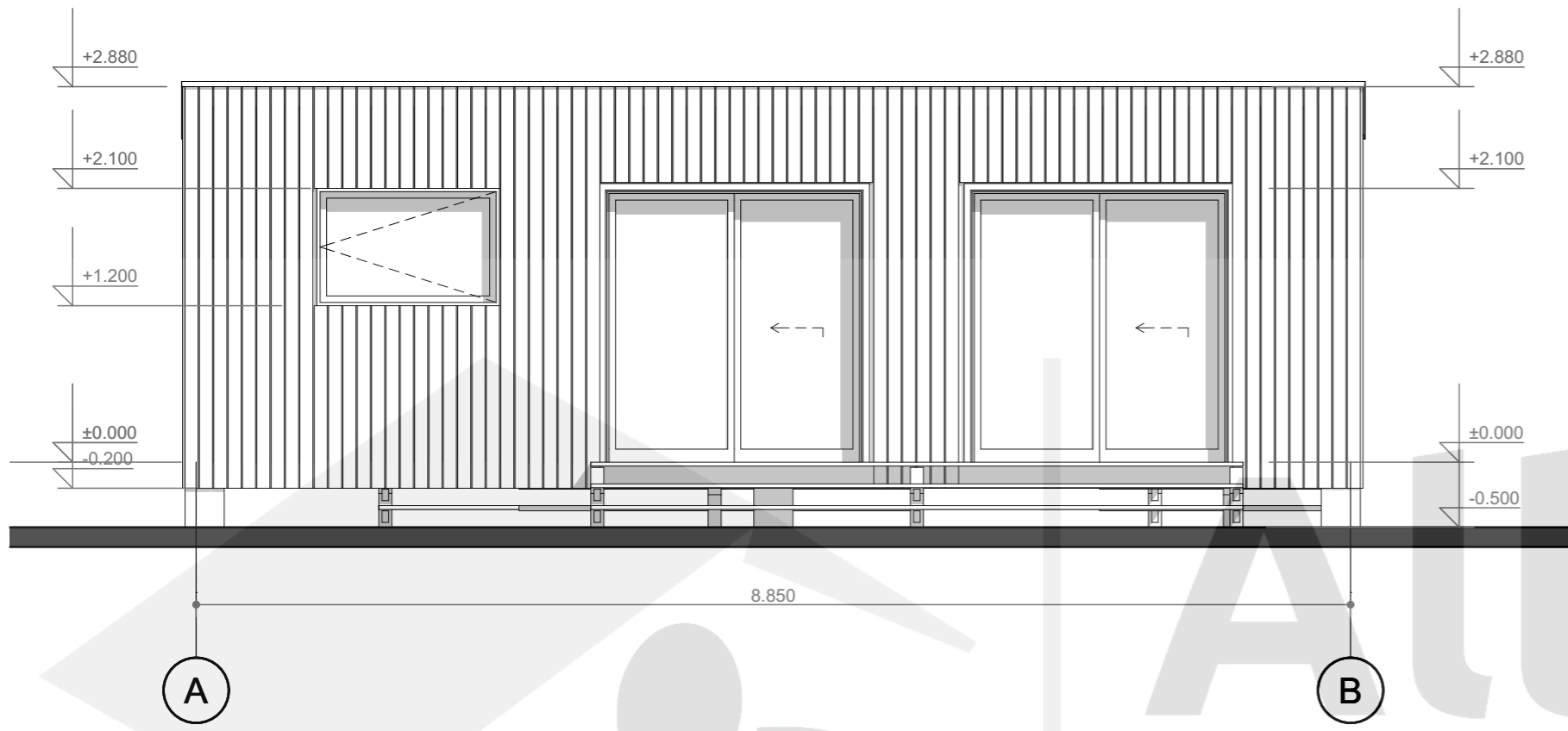
LIVING MODULAR

Floor Plans & Elevations

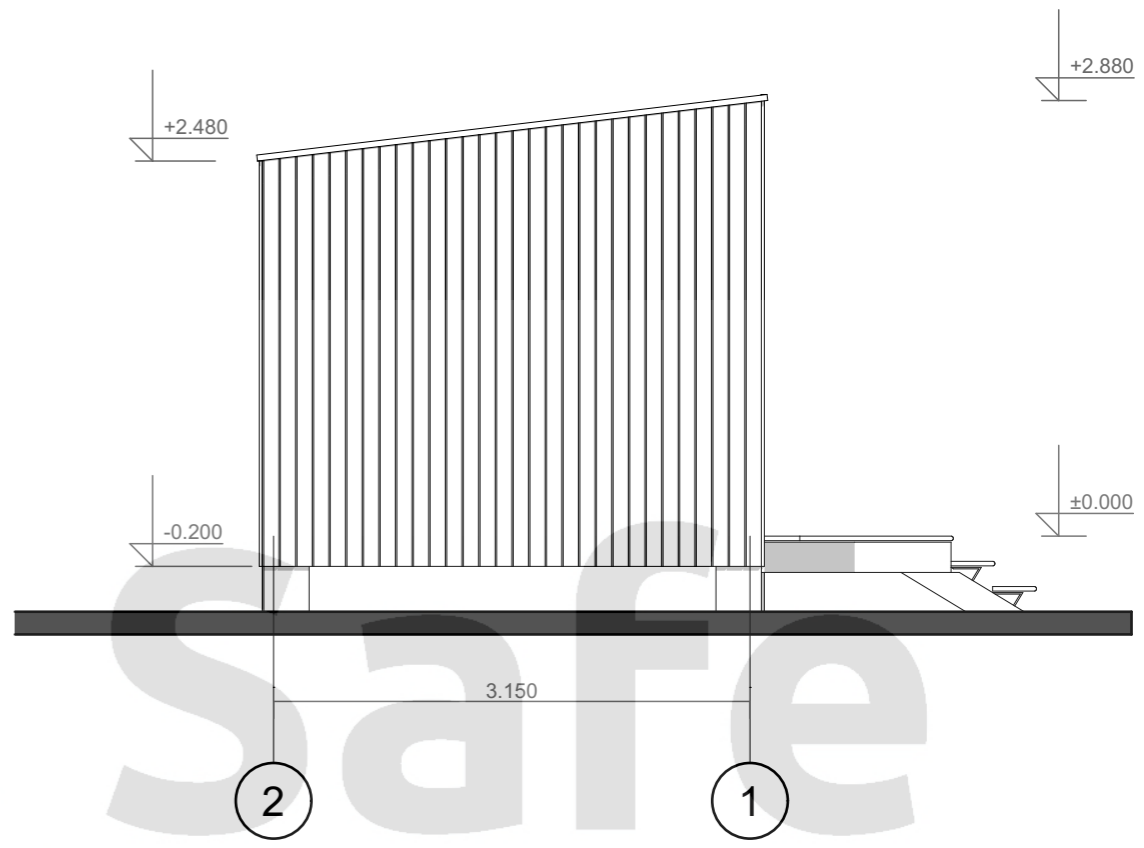
NOTE: These drawings are indicative only. For site-specific drawings that match your wind and BAL requirements, please contact us. These drawings include engineering for piers / footings and structural connections to the modular subframe base for 3 soil conditions – for site specific soil class an extra fee would be incurred. For sloping or problematic sites, you will need a survey plan, soil test and slope report before contacting us for site specific engineering – fees apply. Standard drawings and engineering are included in the price. Any site-specific investigations are your responsibility.



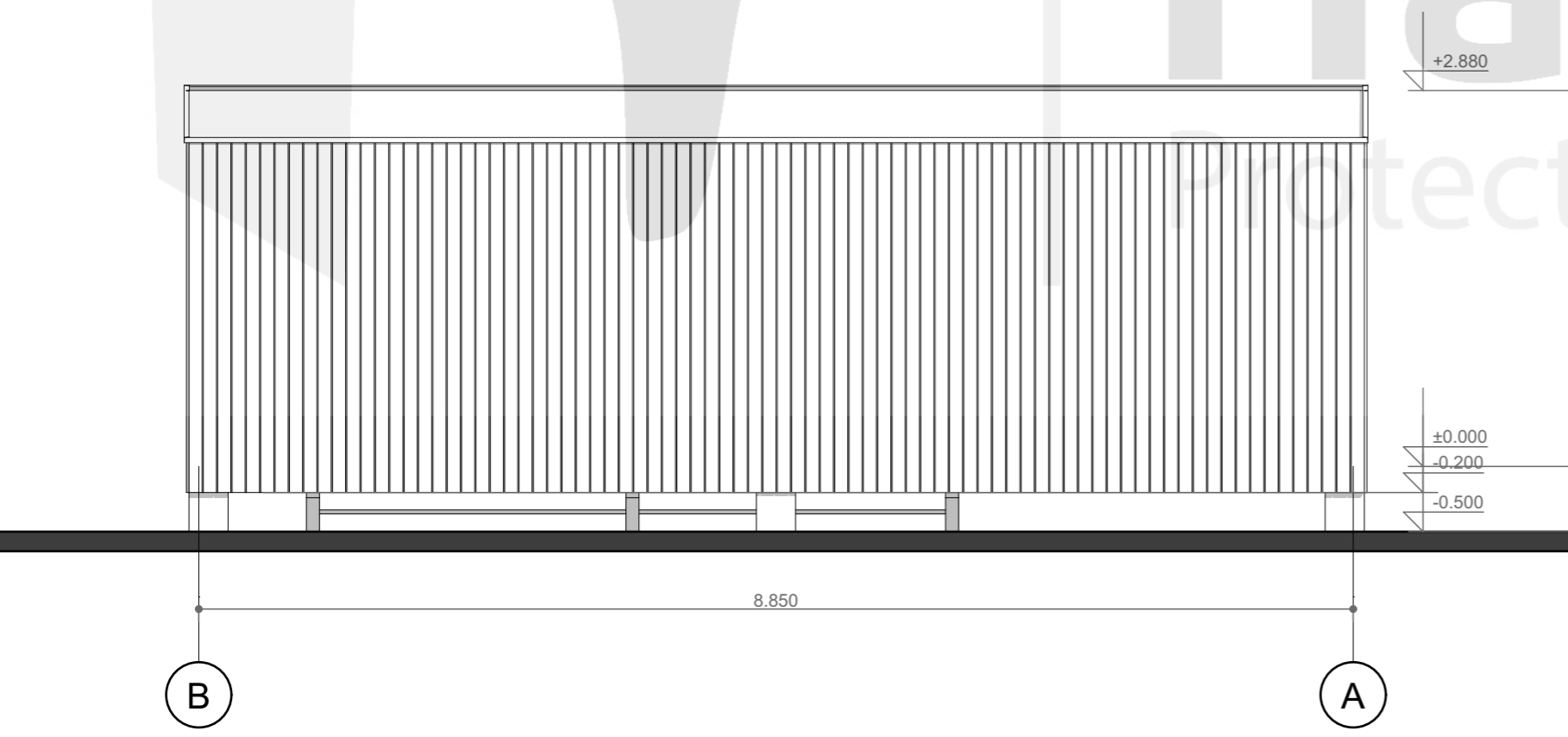




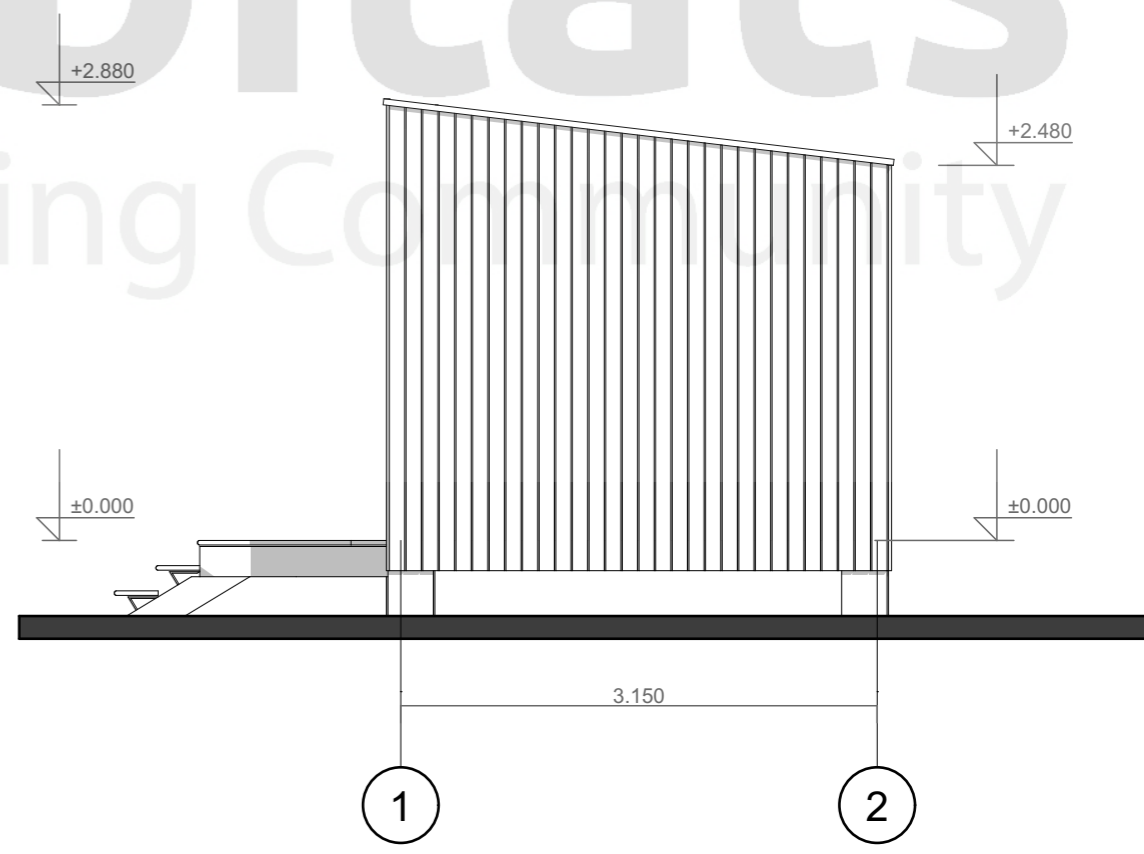
W Elevation 1:50



N1 Elevation 1:50

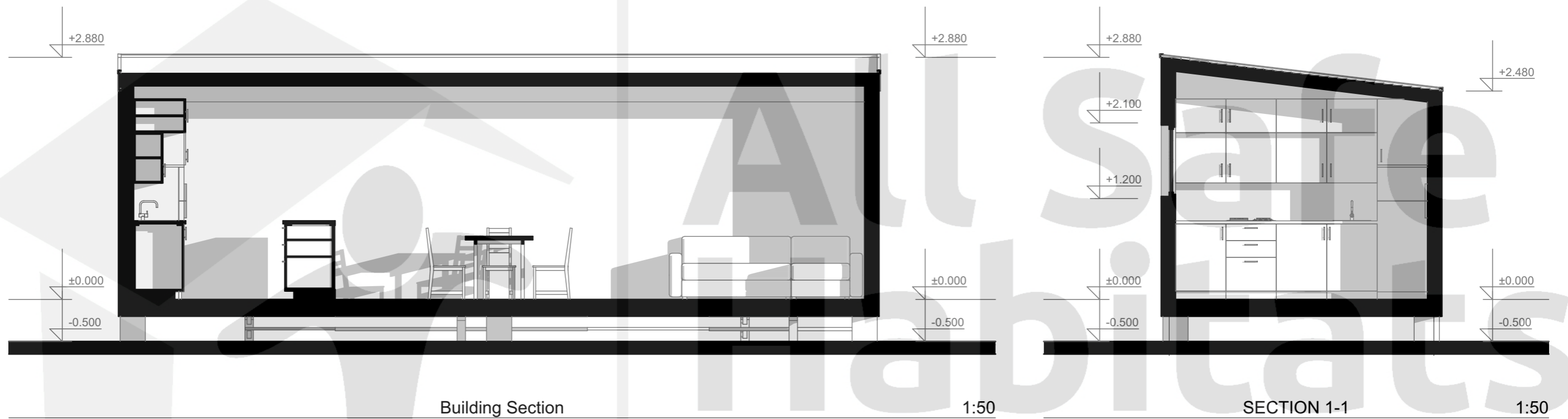


E Elevation 1:50



S1 Elevation 1:50

All Safe Habitats
Protecting Community



Protecting Community