



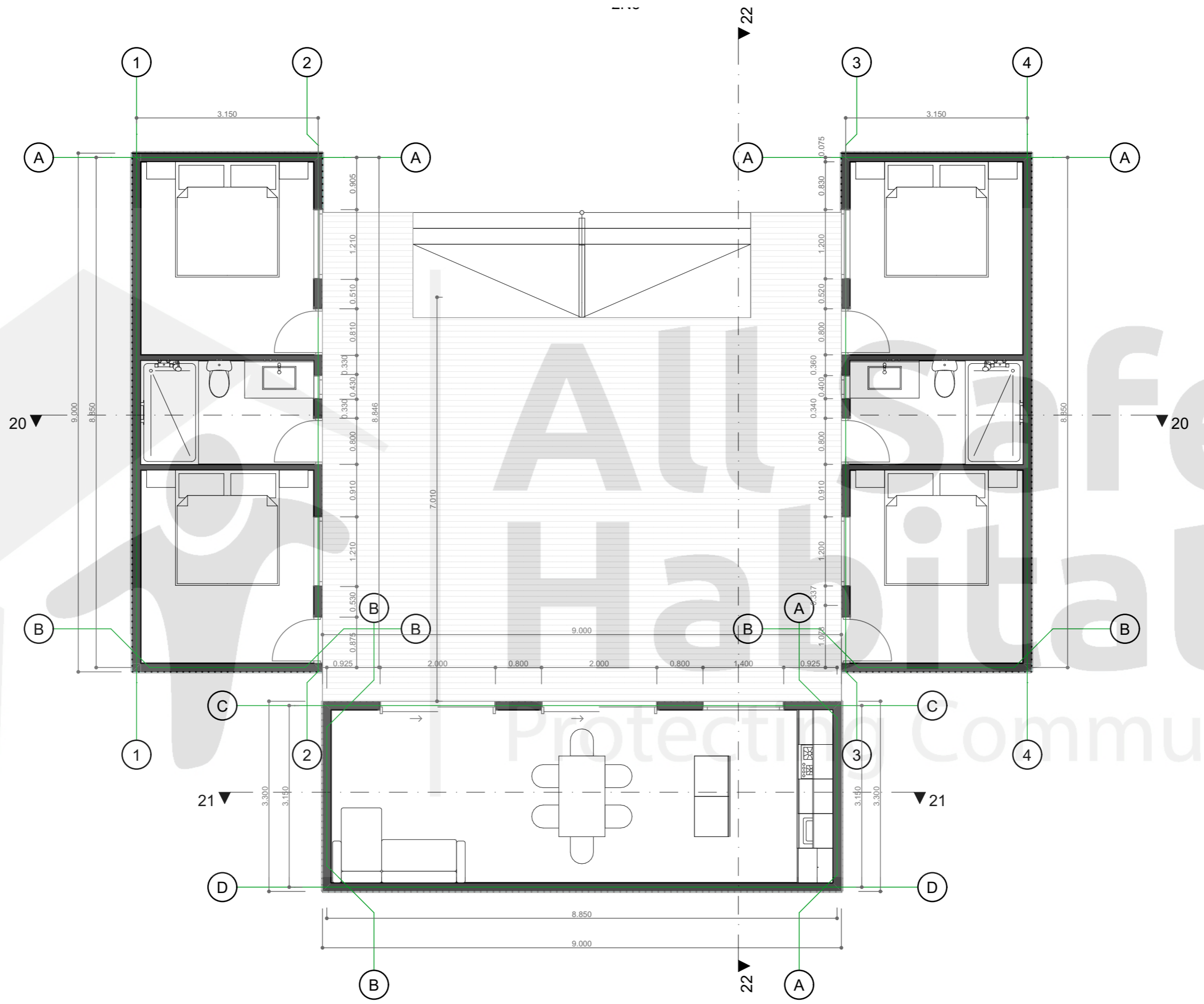
**All Safe
Habitats**
Protecting Community

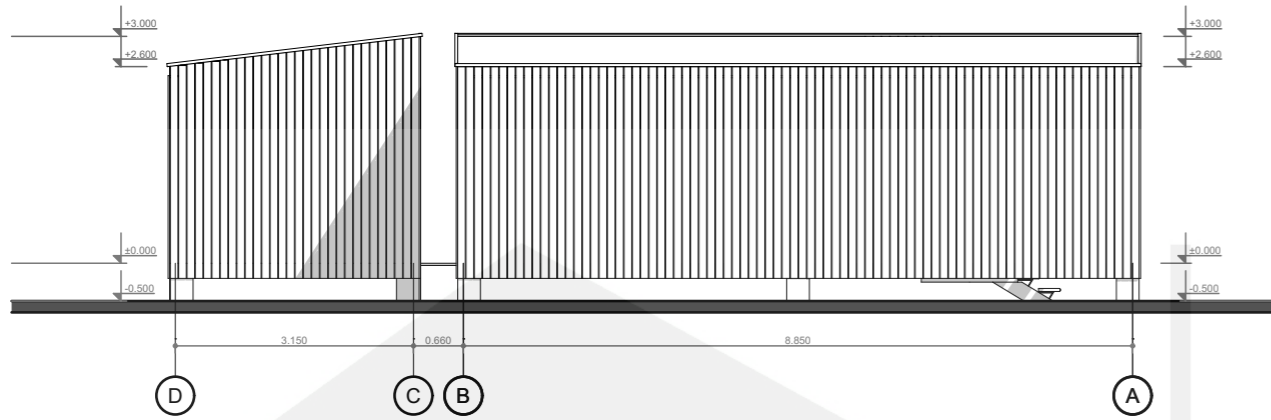
THE NOOSA

Floor Plans & Elevations

NOTE: These drawings are indicative only. For site-specific drawings that match your wind and BAL requirements, please contact us. These drawings include engineering for piers / footings and structural connections to the modular subframe base for 3 soil conditions – for site specific soil class an extra fee would be incurred. For sloping or problematic sites, you will need a survey plan, soil test and slope report before contacting us for site specific engineering – fees apply. Standard drawings and engineering are included in the price. Any site-specific investigations are your responsibility.



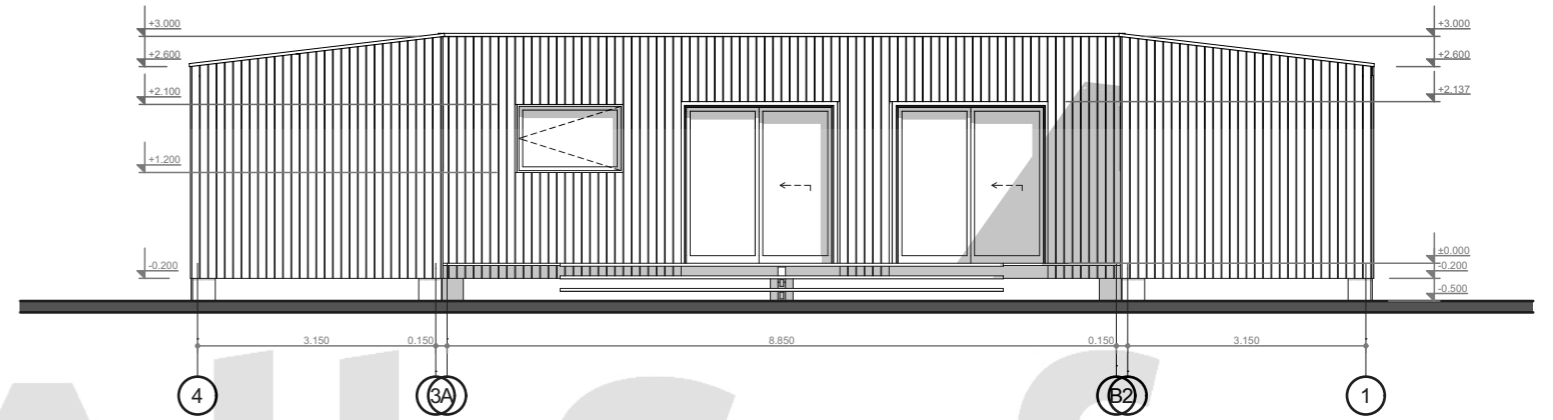




2E3

EAST ELEVATION

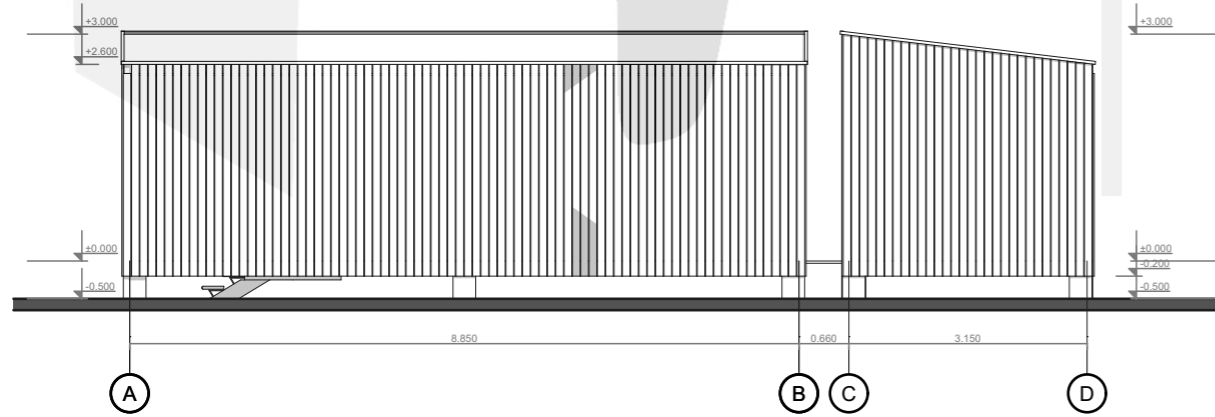
1:100



2N3

NORTH ELEVATION

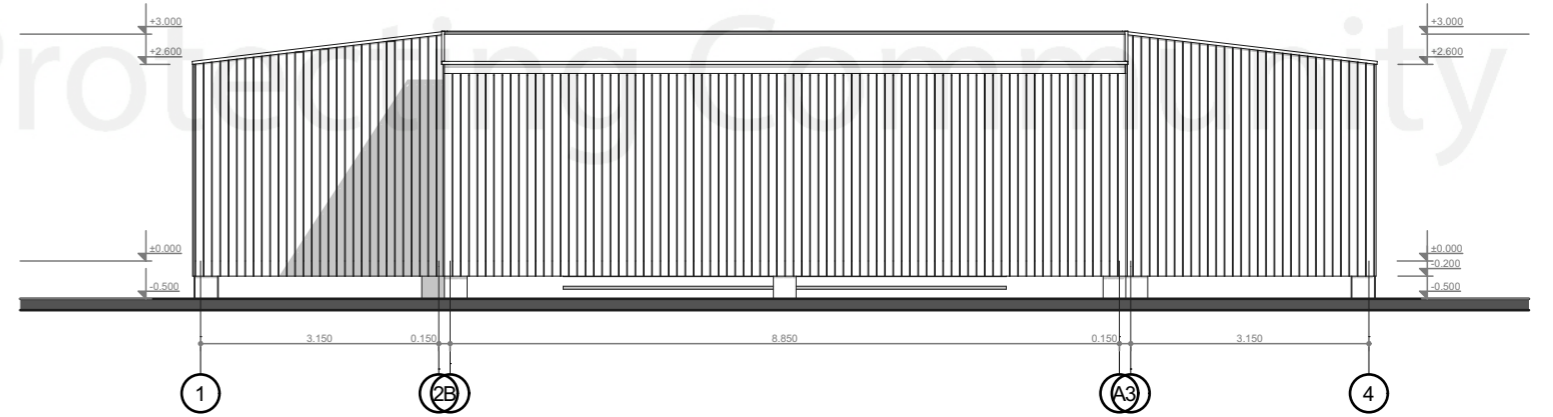
1:100



2W3

WEST ELEVATION

1:100

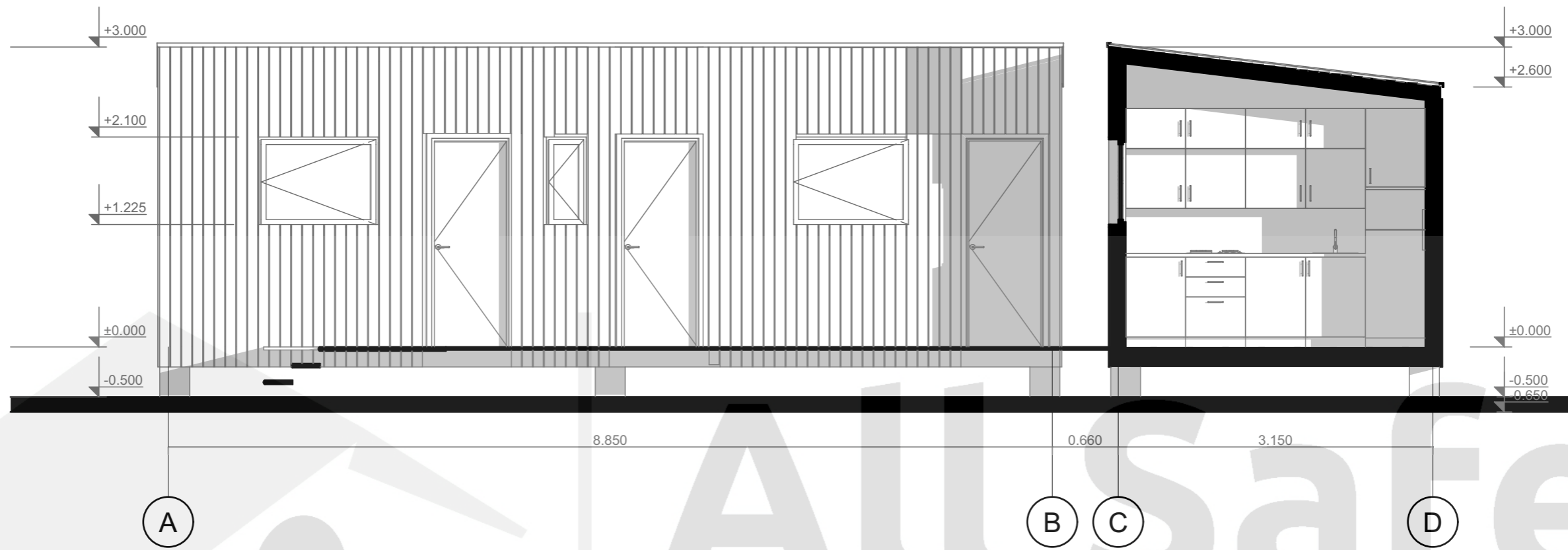


2S3

SOUTH ELEVATION

1:100

All Safe Habitats
Protecting Community



22

SECTION 22

1:50

